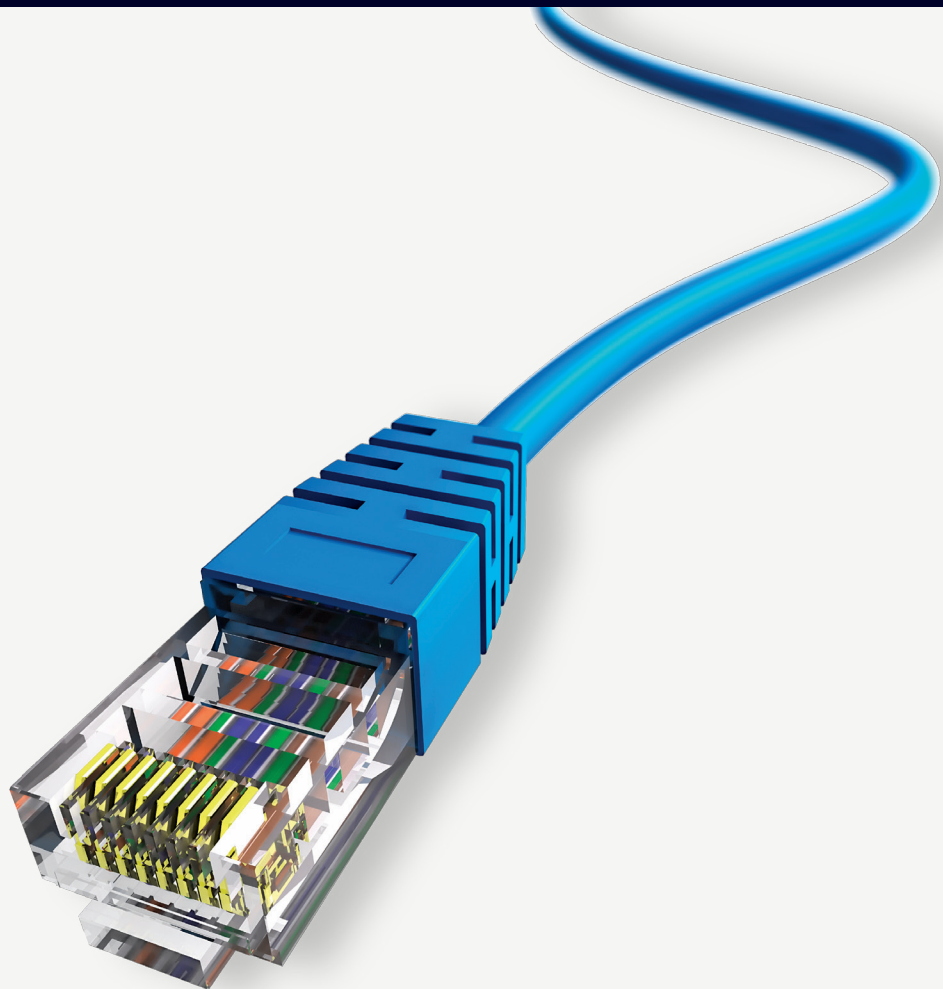


PRODUCT GUIDE

EtherNet/IP products

A comprehensive and flexible solution from Siemens with "Best-in-Class" features

Siemens has a comprehensive line of products with flexibility to integrate into PROFINET and EtherNet/IP™ networks. From Distributed I/O, SINAMICS Drives, HMI Hardware and Software, RFID, Networking and Switches, to Cabling, Siemens can supply the entire system. Backed by "Best-in-Class" features, benefits, and support, Siemens solutions can meet your industrial communication needs!



EtherNet/IP products

A comprehensive and flexible solution from Siemens with "Best-in-Class" features

Keep your existing PLC configuration!

- Keep your existing PLC configuration and add one or more Siemens EtherNet/IP enabled components
- Each Siemens product is a solution within your existing EtherNet/IP network

Why use Siemens products?

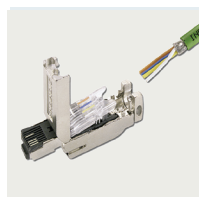
- **"Best-in-Class"** components featuring state-of-the-art technology with innovative features
- **Comprehensive range** of EtherNet/IP products to support your entire solution
- **Compatible, easy-to-configure** components
- **Flexibility** to support both PROFINET or EtherNet/IP
- **Global sales support and availability**
- **Competitively priced** products

Benefits for OEM Machine Builders

- Reduce cost-of-change by standardizing on Siemens EtherNet/IP products – control system design stays the same, only the network changes
- Easy migration – minimal control system design changes; OEM can provide dual-platform option
- Siemens OEM Partner Program

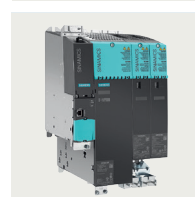
Cabling

- Siemens offers both cabling and connectors
- Our FastConnect Cabling offers time-saving, error-free field assembly of custom length industrial grade Ethernet cables



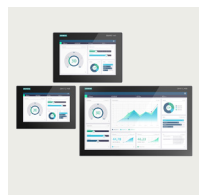
SINAMICS Drives

- Siemens is the global leader in drive technology, offering a flexible, efficient, established solution
- With direct network connectivity to PROFINET, EtherNet/IP and standard Ethernet, SINAMICS G120 and S120 Drives always fit comfortably within your plant's network



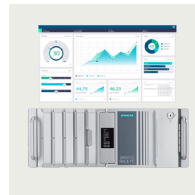
HMI Hardware

- Siemens is the global leader in HMI panel technology
- Comfort, mobile, and basic panels available
- With direct network connectivity to PROFINET, EtherNet/IP, Modbus TCP/IP, and other Ethernet drivers, SIMATIC HMI panels offer "Best-in-Class" visualization when combined with many third party controllers

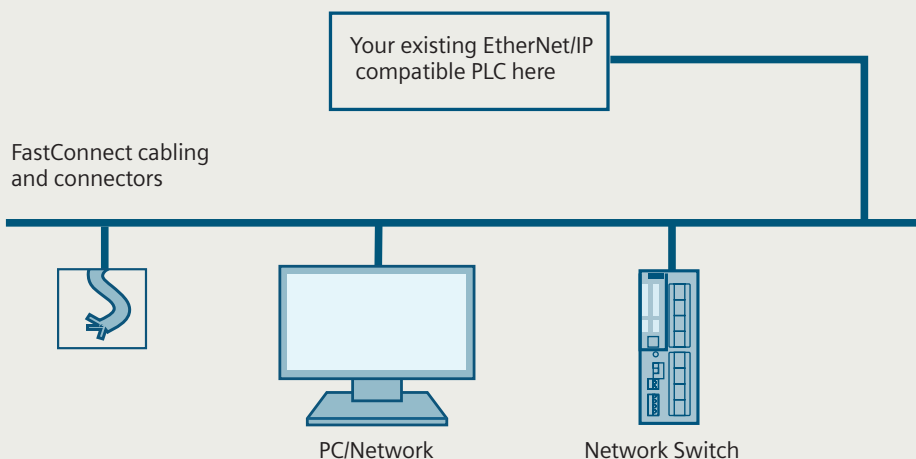


HMI Software

- Siemens is the global leader in HMI software
- SIMATIC HMI Software offers scalable architectures from panel based solutions to distributed architecture



Siemens line of products offer distinctive advantages on the EtherNet/IP network



Networking and Switches

- Preconfigured out-of-the-box variants available for both PROFINET and EtherNet/IP
- Change between PROFINET and EtherNet/IP via settings in web based management



Identification and Locating

- RFID, RTLS and code reading systems (1D and 2D codes)
- Comprehensive technologies (HF, UHF, active/passive tags, PoE gateways and code reading) available on common EtherNet/IP networking and programming interface



ET200SP Multi-fieldbus (MFB) Distributed IO

- SIMATIC ET 200SP, Multi-fieldbus, 2-port interface module, Profinet/Ethernet IP/Modbus TCP, max. 64 I/O modules and 16 ET 200AL modules
- Delivers multiple discrete, analog and counter modules and both direct and reversing motor starters
- Provides very simple field repair with hot swapping and fixed field wiring



[Explore Distributed I/O](#)

Profinet/Multi-fieldbus (PN/MF) Coupler

- SIMATIC PN/MF coupler, multi-fieldbus coupler, Profinet IO, EtherNet/IP, for deterministic data exchange between max. one controller per side, redundant current infeed, Ethernet connection via SIMATIC BusAdapter (BA), supplied without BusAdapter

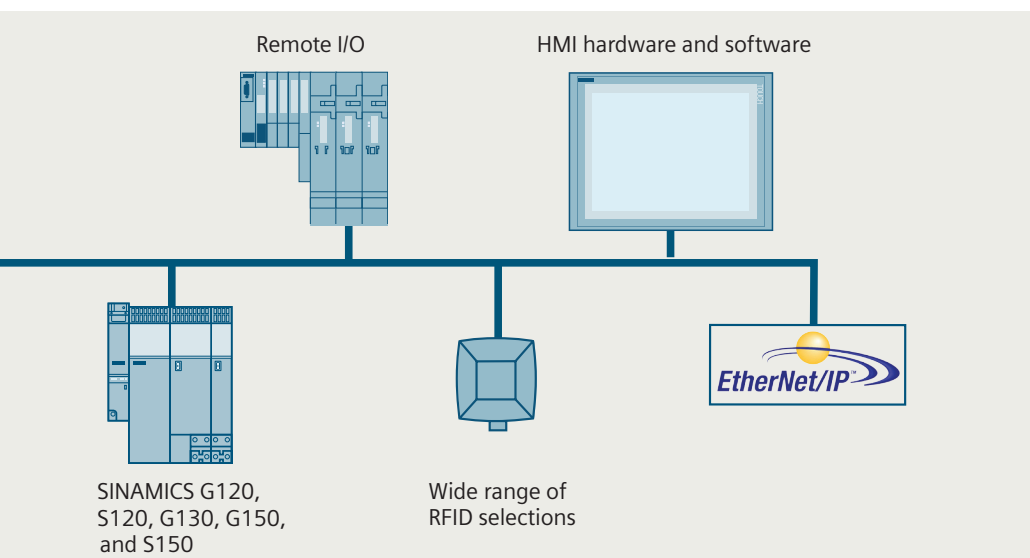
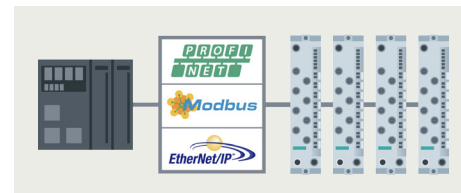


ET200 Eco PN M12-L

(Block IO configurable for Profinet or Ethernet IP or Modbus TCP)

- Compact block I/O for processing digital, fail-safe digital, analog and IO-Link signals for connecting to bus systems with Ethernet-based protocols Profinet, EtherNet/IP and Modbus TCP
- Cabinet-free design in degree of protection IP65/67 with M12 connection system

- Extremely rugged and resistant metal enclosure
- Ambient temperature range -40 °C to 60 °C
- M12-L coded power connectors



Published by

Siemens Canada Limited
1577 North Service Road
Oakville, ON L6H 0H6
Canada

Customer Interaction Centre

Tel: 1 (888) 303-3353
cic.ca@siemens.com

PDF only

© 2023 Siemens Canada Limited

Legal Manufacturer

Siemens Industry, Inc.
100 Technology Drive
Alpharetta, GA 30005
United States of America

Telephone: +1 (800) 241-4453

usa.siemens.com/eip

Subject to changes and errors. The information given in this document only contains general descriptions and/or performance features which may not always specifically reflect those described, or which may undergo modification in the course of further development of the products. The requested performance features are binding only when they are expressly agreed upon in the concluded contract.

All product designations may be registered trademarks of Siemens AG. All other designations in this document may represent trademarks whose use by third parties for their own purposes may violate the proprietary rights of the owner.